




Assessing impact of a new mental health funding initiative in Ontario

Making Gains
November 3, 2009

Janet Durbin PhD
Elizabeth Lin, PhD
Natalia Zaslavska, MSc



Broad expectations of new funding initiatives

Capacity:

- To increase capacity in community mental health service sector & reduce regional variation

Diversion

- To divert individuals with mental health concerns from more restrictive settings for illness management; facilitate appropriate system entry


System function

- To improve function of systems of care




Impact Study Mandate

- Describe Ontario experience on these issues
- Three components
 - Health administrative data -CMH funding, ED use
 - Police services survey - contacts, diversion practices
 - Crisis program survey - capacity, linkages to support diversion
- Analyses
 - Trend over study period: 2003 - 2007
 - Regional variation

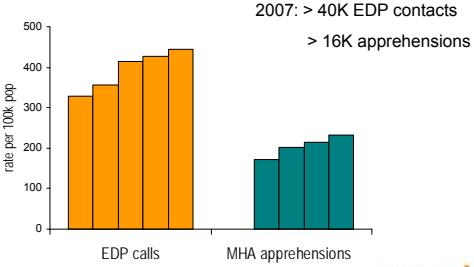


Police services survey

- What is the volume of police-citizen encounters that involve mental illness, and has it changed over the study period? ('burden')?
- What is extent of practice implementation to manage police-citizen encounters, and change over the study period?
- Do burden and practice implementation differ between forces serving larger and smaller population areas?




Increasing rates of police-citizen contacts 2003-2007



2007: > 40K EDP contacts
> 16K apprehensions

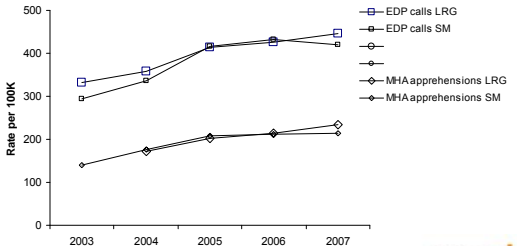
rate per 100k pop

EDP calls MHA apprehensions



*Municipal forces n=25


Increasing rates of police-citizen contacts for large area (n=14) and small area (n=23) forces



Rate per 100k

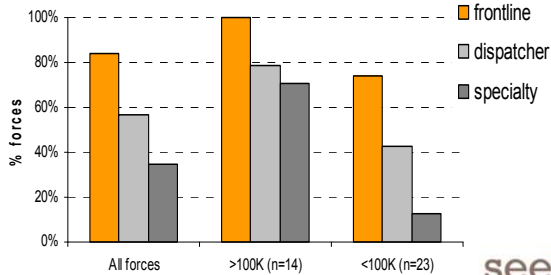
2003 2004 2005 2006 2007

- EDP calls LRG
- EDP calls SM
- ◇ MHA apprehensions LRG
- △ MHA apprehensions SM



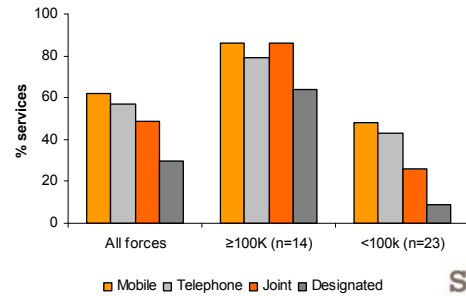
*Municipal forces n=25

Police services practices to support diversion - training



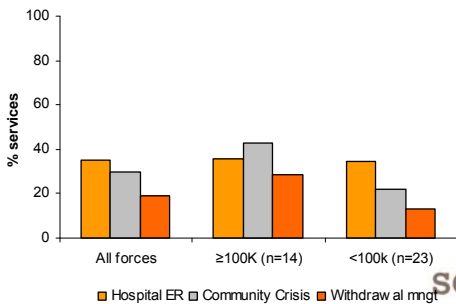
seei

Police services practices to support diversion - on-site response



seei

Police services practices to support diversion - agreements for post contact transfer of care



seei

Compared to 3 years ago services estimate that ...

Perceived change in ...	More (%)	Same (%)	Less (%)
Participation in area MH initiatives	70	30	0
Support from MH services	57	38	5
Officer ability to manage EDPs	54	46	0

seei

Police services survey results

- Police-citizen contacts for mental health concerns are substantial and increased over the study period
- Many services have practices in place to support diversion
 - Large area forces more active than small area forces
 - Implementation of some practices low - may reflect triage
 - Much diversion related activity since 2005
- Perception increased collaboration and support from MH services

seei

Limitations

- Administrative data - quality, variation in recognition and reporting
- Aggregate not encounter - cannot link practice with management/outcome
- Lack outcome data
- Generalizability of perceptions/estimates - small sample (n=37)

seei

Impact Study Team

Core team

- J. Durbin, E. Lin, N. Zaslavka

Advisory

- T. Aubry, B. Kirsh, L. George, M. Quigley, J. Zosky, P. Reaume-Zimmer, J. Mills, D. Doherty, M. Fata

seei

THANK YOU!

Janet_Durbin@CAMH.net
Elizabeth_Lin@CAMH.net
Natalia_Zaslavka@CAMH.net

www.ehealthontario.ca



seei